

How to setup Dark Sky API for Weather Component

Archived

Dark Sky has joined Apple. You can read more here: <https://blog.darksky.net>.

Use of the API service is subject to the updated Dark Sky Terms and Conditions, including the Apple Privacy Policy ("Terms"). By continuing to use the API service, you are agreeing to be bound by these Terms.

If you have any questions, please contact us at developer@darksky.net. - The Dark Sky Team

1. Register

Register and create Dark Sky Account developer account

<https://darksky.net/dev>

2. Secret Key

After email verification, log in and copy secret key for Dark Sky API

The screenshot shows the Dark Sky API developer dashboard. At the top, there are navigation links for 'DOCS', 'FAQ', 'CONSOLE', 'ACCOUNT SETTINGS', and 'LOG OUT'. The main content area is titled 'Your Account' and includes a section for 'Your Secret Key'. Below this, there is a text input field containing a long alphanumeric string (partially visible as 'd6cc...') and a 'RESET SECRET KEY' button. Further down, there is a 'Plan Type' section with 'Sample API Call' and a link to 'documentation'. At the bottom, there is a text input field containing a sample API call URL: `https://api.darksky.net/forecast/d6ce66851f493114e088d7881ae93e7b/37.8267,-122.4233`.

3. Create New Integration

Navigate to `Admin > System > API keys`

click add new integration and create the following API key as required

Edit Integration

API Name and Description are required. You will also need to add at least one entry. This page cannot validate the keys you enter so test your integration in the front-end to ensure that the keys you've entered are valid and working correctly.

API Name*	dark_sky
API Description*	Dark Sky API Key
API Help*	Allows the weather co

Entries

Entry Key	api_key	Entry Value	3bff..2413	<input type="button" value="Add an entry"/>
-----------	---------	-------------	------------	---

API name: **dark_sky**

API description: **Dark Sky Weather API**

API help: **Allows the weather component to connect to the Dark Sky API**

Entry Key: `api_key`

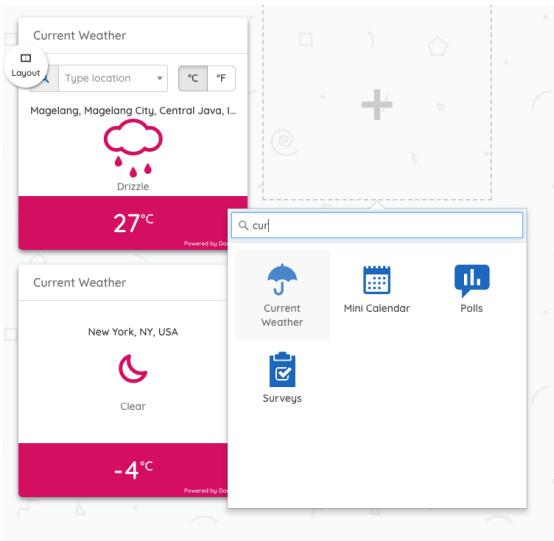
Entry Value: `xxxxxxxxxxxxxxxxxxxxxxxxxxxx`

Paste secret key to the entry value.

4. How to test ?

First please make sure that [Google API for Map](#) is also configured, this is required for predictive location input.

If you have weather component installed, then from any Pages you should be able to add new weather



Related Article

[Weather Component](#)

Last modified on 1 December 2023 by [Hannah Door](#)

Created on 29 January 2019 by [Michael Christian](#)

Tags: [weather](#), [dark](#)